

# THE STUMP

INFORMATION BY THE BOARD FOOT

SEPTEMBER 2022

KNOT THE HOLE NEWS

## Assessing Tree Decay – Biology, Biomechanics and Risk Workshops

Decay On Trees – But Just How Alarmed Should We Be? With only outward signs such as fruiting bodies, wounds and cavities to go on, we're often left guessing at just how compromised the tree is.

Frank Rinn and Dr. Chris Luley will show us what's really going on inside decaying trees. Using the most advanced technology (the Arbortom sonic tomography system, Resistograph resistance drill, DNA testing) and the most basic (a mallet, our eyes and our ears), these experts will demonstrate the best methods available for decay assessment.

There are two, identical two-day workshops on Oct. 24-25 and Oct. 26-27 (13.5 CEU's available each session) and a one day advanced session on Oct. 28 (7 CEU's available). The workshops will be split between classroom sessions and in-field tree assessments performed by Dr. Luley and Frank Rinn. Attendance is limited to 75 participants for each of the two-day sessions. Both sessions are identical in content; you should select whichever dates fit your schedule best. Sessions cannot be mixed and matched. The one-day advanced training session on Friday October 28 will cover the same material in the main workshops but in greater depth, with the smaller group size making for a more interactive learning experience. It is recommended for advanced experts only, the session will be science-heavy.



UMass Extension

Learn more and register at: <https://greatriversgreenway.org/assessing-tree-decay/>.

## MCFC Arbor Day Poster Contest

Are you looking for a easy way to educate kids about trees? The MCFC Arbor Day Poster Contest is a great way to educate kids, share with your community, and spike interest in trees.

The contest is for any Missouri 5th grade student. This includes public and private schools and home-schooled children. The rules for the contest are clearly explained in the materials provided by MCFC. This includes poster content, size, materials, deadlines, and data recording, where and when to send schools' winning poster for the state contest.

MCFC provides all of the educational materials for the program, including a slideshow with notes for a presenter. The education materials meet several Missouri Learning Standards set for students by the Department of Elementary and Secondary Education.

### So, how do you run a local contest?

First you need to get the interest of a local 5th grade teacher or art teacher and appropriate permissions from the school for you to lead the contest. Once that is done, you will teach the education material, share the poster contest rules, then let the kids create their posters. After the posters are created, you will need to select an individual school winner. Judges need to follow the guidelines provided in the materials. A tree board or ad hoc group can be the judges. The winners' poster and record keeping/entry form attached to the back will be mailed in time to the address in the contest rules.

### What else can be done with the contest?

The students posters can be shared with the public and parents in a public display. This can be in store front windows, public building, art gallery, etc. Wherever you have free public access for people to see the images. This provides recognition for all of the students that participated, allows family members to see the work and give the kids a chance to share with them about trees and their art, provides the greater community the opportunity to learn from the kids art, and promote trees in general in your community.

### Prizes

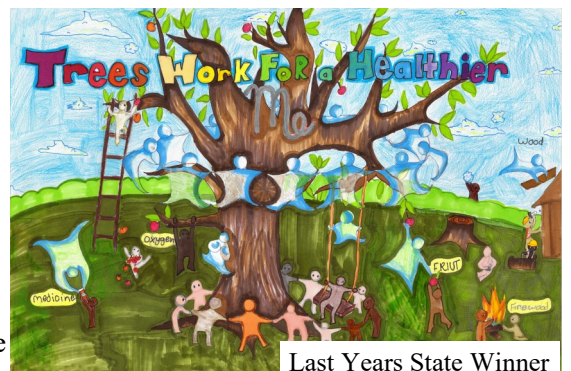
All students that participate and MCFC receives an entry to the State contest from their school will receive a pencil.

The top twelve state entry posters will be scanned and used to create a MCFC calendar.

There are a number of other prizes for technical merit winner and their teacher, and for 2nd and 3rd place students, and the popular vote winner.

Local contest organizers are welcome to have awards for your contest and are encouraged to honor the student at an appropriate event like your local Arbor Day in 2023.

Learn more about the contest and get the materials on the Missouri Community Forestry Council website at: <http://www.mocommunitytrees.org/arbor-day-poster-contest.html>



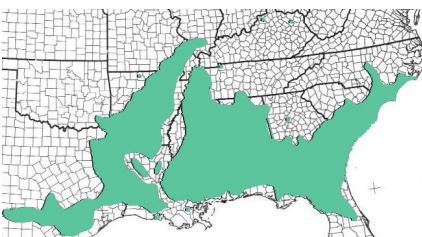
Last Years State Winner



red buckeye  
*Aesculus pavia*

Red buckeye is a small tree to large shrub depending on the growth form and pruning. It has a mature height of 15 to 20 feet and equal spread.

Appropriate for any yard, park or street planting strip, this tree will reward the grower with clusters of red flowers between April and June. It grows best in moist well drained soils with full sun, but has been observed on a variety of soils in cultivation. The leaves are known to drop early, but may hang on longer in partially shaded sites. The cultivar 'Atrosanguinea' has deeper red flowers and 'Humilis' is a low shrub with small panicles of flowers.



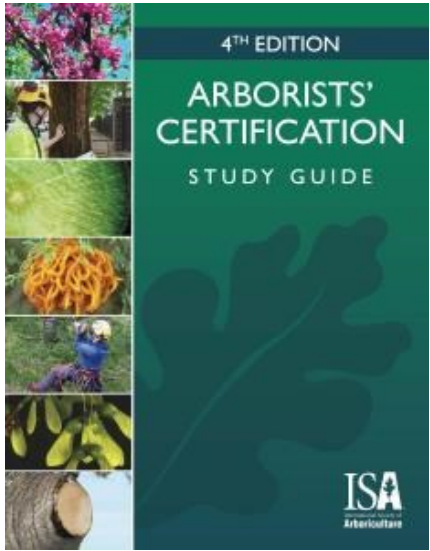
Images from MDC. Range map modified from UConn Plant Database (2008).



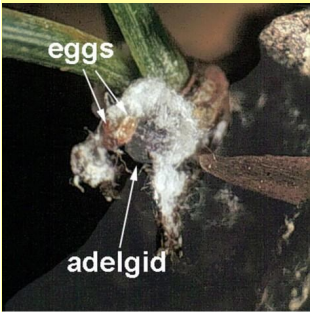
Book Review - Arborists' Certification Study Guide, Fourth Edition

The fully-illustrated 4th edition is a must-have book for ISA Certified Arborist® candidates and provides a strong foundation and reference for all tree care professionals. The new issue has these features: Complete and up-to-date resource designed to help you prepare for the ISA Certified Arborist® exam; Fully illustrated in color with over 440 photos and illustrations, including nearly 200 new to this edition; Significantly enhanced chapters on Pruning, Risk Assessment, Climbing, and Urban Forestry; Consistent with every BMP revision as of February 2021; Comprehensive glossary of arboricultural terms; and Valuable list of additional recommended resources. This issue is also available in digital format.

Get it at: <https://www.isa-arbor.com/store/product/7/cid/17/>



Pine adelgid - *Pineus strobi*



A typical adelgid and her eggs at the base of pine needles. Photo by J. R. Baker



Pine bark adelgids on eastern white pines in western North Carolina. Photo by J. R. Baker

Adult pine bark adelgids, *Pineus strobi*, are small, dark (purplish to yellow) insects covered with a white, flocculent material. Eggs are milky to light yellow-brown but as the embryo matures, the eggs darken. Nymphs resemble but are smaller than adults. At first naked and yellow, newly hatched nymphs soon darken and begin to secrete white, fluffy threads. Adelgids are among the most commonly reported insect pests of white pines. Pine bark adelgids can overwinter in all stages, though mostly as immature females. In late winter, development resumes, and each female lays up to 24 eggs in a woolly mass. After laying her eggs, the female dies. From these eggs develop both winged and wingless forms. Of the several different forms of immature adelgids (a characteristic of phylloxerids), only the crawler stage and winged forms are capable of migrating. The stationary wingless forms continue to reproduce parthenogenetically all season. There are five or more generations per year.

Horticultural spray oil can be applied during the winter and before new growth emerges in spring. Pine bark adelgids are not resistant to pesticides. Insecticidal soaps are very effective as are horticultural oils (oils may remove the white wax from the needles of white pines, turning them a sickly, yellowish green). Oil sprays may damage white pine during the growing season, especially in dry weather. Systemic insecticides such as imidacloprid are also effective as are pyrethroid and other contact insecticides.

There are rich counsels in the trees.

~Herbert P. Horne

September 12—14

ISA Annual Conference, Malmö, Sweden. Early Bird Registration due July 15. Check for more details at: <https://na.eventsclooud.com/website/34982/home/>.

September 20—22

Trees and Utilities Conference, Milwaukee, WI. Early Bird Registration due June 21. Check for more details at: <https://treesandutilities.org>.

October 4

ISA Certification Exam, Catoosa, OK. Registration Deadline: September 16. Information at: [www.isa-arbor.com/Credentials/Exam-Information](http://www.isa-arbor.com/Credentials/Exam-Information).

October 9—12

Environmental Concerns in Rights-of-Way Management: 13th International Symposium, Charlotte, NC. Learn more at: [www.rights-of-way.org](http://www.rights-of-way.org).

October 12

ISA Certification Exam, Jefferson City, MO. Registration Deadline: September 26. Information at: [www.isa-arbor.com/Credentials/Exam-Information](http://www.isa-arbor.com/Credentials/Exam-Information).

October 18

TRAQ Renewal Course, Grinnell, IA. Registration Deadline: September 24. Information at: <https://iowaarboristassociation.org/events/>.

October 18—21

Professional Grounds Management Society (PGMS®) School of Grounds Management (SGM) 2022 Annual Conference, Louisville, KY. Early Bird Registration due August 15. Learn more at: <https://pgms.org/page/2022AnnualSGM>.

October 20—22

TRAQ Full Course, Oklahoma City, OK. Information at: <https://mwisa.growthzoneapp.com/ap/Events/Register/zLwDk7zr?mode=Attendee>.

October 20—22

TRAQ Full Course, Grinnell, IA. Registration Deadline: September 24. Information at: <https://iowaarboristassociation.org/events/>.

November 9—12

TCIAExpo'22, Charlotte, NC. Early Bird Registration due September 1. Check for more details at: <https://expo.tcia.org/>.

WHAT'S HAPPENING

“The Stump” website: <https://thestumpnewsletter.weebly.com>

To add or remove your subscription, update your address, change contact information or convert from the paper to the email - web version of “The Stump” contact:

Jon Skinner  
Community Forester  
MO Dept. of Conservation  
201 W. Riviera Dr.  
Joplin, MO 64804  
417-629-3434 Ext. 4543  
[Jon.Skinner@mdc.mo.gov](mailto:Jon.Skinner@mdc.mo.gov)



Use of names of commercial products or organizations does not imply an endorsement or recommendation by the Missouri Department of Conservation