

THE STUMP

INFORMATION BY THE BOARD FOOT

SEPTEMBER 2020

KNOT THE HOLE NEWS

MCFC Annual Conference Moved to March 2021

With the safety of all in mind, the MCFC annual conference scheduled for October 2020 has been rescheduled to March 15 - 17, 2021. The conference will still be held at Chateau on the Lake, Branson. The conference committee is busy reconfirming presenters and in the future will provide details on the conference website (www.mcfcconference.com) and the main MCFC website (www.mocommunitytrees.org) as things develop.



2020 ISA Annual International Conference is Going Virtual



ISA made the difficult decision to cancel the in-person 2020 ISA Annual International Conference and Trade Show slated for 15-17 December 2020. The safety and well-being of attendees, members, employees, partners and vendors is their top priority. The decision was made due to recent developments in COVID-19 cases, the restrictions placed by public health officials on large gatherings through 2020 in Albuquerque, and the overall climate surrounding travel and meetings. Keep watching for details at www.isa-arbor.com/Events/Annual-Conference.

Making a Difference

Ever wonder if being a Tree City USA, Tree Line USA, or Tree Campus made a difference or not. You have proved it does. The Arbor Day Foundation recently sent out an annual summary of all of Missouri's Tree City USA information and national summaries of Tree Line USA and Tree Campus Higher Education. It is amazing seeing what you have achieved as a group.

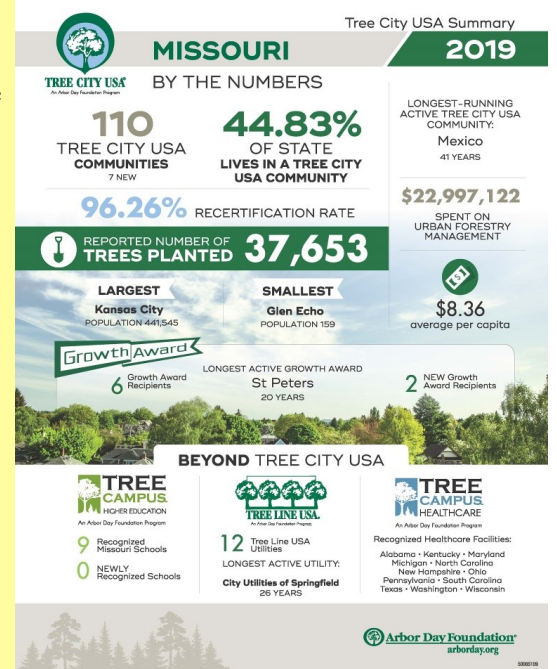
In Missouri alone, there are 110 Tree City USA communities. Together you invested \$22,997,122 or an average of \$8.36 per resident in your communities. The people living in those communities account for 44.83 percent of Missouri's total population. You reported planting 37,653 trees in Tree City USA communities. Imagine the benefits these new trees and what they will provide to your communities for years to come.

Unfortunately, less information directly related to Missouri was filtered down to us for Tree Line USA and Tree Campus Higher Education.

We know 12 utilities earned Tree Line USA recognition. They are following approved pruning guidelines near utility lines, providing education to the communities they serve, participating in local Arbor Day events, educating their staff and contractors on how to work around and with trees, and more all while providing safe, reliable electric service.

There were nine higher education campuses recognized as Tree Campus Higher Education. These campuses are taking care of the trees according to approved guidelines, educating students, staff and surrounding community about trees, have a campus tree care plan, and more.

Together these cities, utilities, and schools are leading Missouri to a better future through better tree care.



kousa dogwood
Cornus kousa

Kousa dogwood is a small tree with a mature height of 20 to 30 feet with an equal spread. This tree is appropriate for small to large yards, and parks. The specie does best on acidic, well-drained soil. It prefers a relatively sunny site and is more drought resistant than flowering dogwood. There are no serious pests of this tree, borer damage has been reported. The “flowers” are actually modified leaves called bracts around the actual non-showy flower. The “flower” color is white to pink depending on cultivar and weather conditions. The fruit is a cluster of red drupes that looks like a raspberry. It is showy between August and October. Two trees of different genetics are needed for fruit to form. The leaves are dark green and turn to a reddish purple to scarlet in the fall. Several cultivars to consider are ‘Aget’ for large, long lasting white flowers, ‘Beni Fuji’ for dark pink flowers, and ‘Heart Throb’ for large red flowers. Native to Japan, Korea and China, there appears to be great variability between seed sources between these countries.

Image: www.marthastewart.com

Funding to Build Community Resilience With Nature-Based Solutions

The Federal Emergency Management Agency (FEMA) is gearing up to release a Notice of Funding Opportunity (NOFO) for its new Building Resilient Infrastructure and Communities (BRIC) grant program. It represents a steady year-to-year stream of funding for proactive, pre-disaster investment in community resilience, thanks to the Disaster Recovery Reform Act of 2018.

Solutions should both mitigate natural hazard risks and provide communities with co-benefits such as enhanced water quality and wildlife habitat. The BRIC NOFO is anticipated sometime this August or September, and will be posted on grants.gov.

Learn more, including seeing the “Summer Engagement Series, at: www.fema.gov/grants/mitigation/building-resilient-infrastructure-communities.



Web Review - TCI Magazine

TCI Magazine is the official publication of the Tree Care Industry Association. It comes with a free subscription. The magazine originally started as a paper document, then moved to various web enabled versions, and now is fully converted to web page format. I have found interesting and useful articles in the magazine covering all aspects of the tree care industry. This August's issue was heavy on safety. I encourage everyone that works with trees to start reading this magazine. You will regularly find information all can use. See it at: <https://tcimag.tcia.org>. Get your subscription at: <https://tcimag.tcia.org/subscribe>.

Hammerhead worm

Hammerhead worms (*Bipalium* spp.) are a group of invasive, predatory worms. Several have been seen in SW Missouri. These worms eat our native worms and about anything it comes across in the soil. They are primarily active at night. It is not known how this could affect soil fertility.

The worms were most likely brought to the area inside potting soil. They reproduce both sexually and asexually by re-growing heads and tails, if broken apart.

The only known control is to heat the worms and any new soil brought to an area to 93 degrees F for five minutes.



Lory A Woodin

With the COVID-19 situation, all listed events may occur, be postponed, or cancelled depending on the host groups' decisions. Verify before going.

Sept. 2

Take it all off? The Bare-root way to plant trees webinar, 1 - 2:30 PM CT, For Fee Register at: <https://wcisa.net/meeting/5883#>.

Sept. 10

Insect Pests in the Landscape, Urban Forestry Today webinar, 11 AM CT, Info at: <http://www.urbanforestrytoday.org>.

Sept. 16

ROW Reclamation: Right-Of-Way Done Right, UAA webinar, Noon CT, Info at: <https://www.gotouaa.org/project/webinars>.

Sept. 16

PGMS - Leading Your Leader webinar, 1 PM ET, Info at: <https://pgms.org/september-16-webinar-leading-your-leader>.

Sept. 16 - 18

Plan It Native Landscapes Conference - Virtual, Info at: <https://planitnative.org>.

Sept. 21 - 22

Trees & Utilities Conference - Virtual, Info at: <https://treesandutilities.org>.

Sept. 29

Soil Assessment for Urban Trees—Part 2 Actions, Tree Fund webinar, Noon CT, Register at: <https://treefund.org/webinars>.

Oct. 13

Measuring multi-stemmed trees, Tree Fund webinar, Noon CT, Register at: <https://treefund.org/webinars>.

Oct. 20 - 23

PGMS School of Grounds Management Annual Conference, Info at: <https://pgms.org/school-of-grounds-management-annual-conference>.

Nov. 11 - 13

TCIA Executive Arborist Workshop, Milwaukee, WI, Info at: https://eaw.tcia.org/TCIAEAW/EAW_Milwaukee_WI/TCIAEAW/TCIA_Executive_Arborist_Workshop_2020_Milwaukee_WI.aspx.

Jan. 13 - 15

The Western, Info at: <https://www.wnla.org/page/Western>.

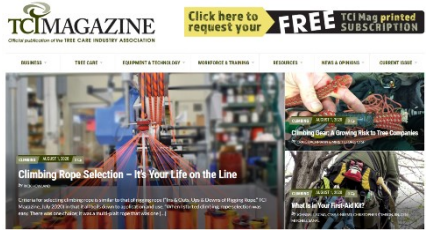
Jan. 13 - 15

TCI Summit '21 - Virtual, Info at: <https://summit.tcia.org>.

Jan. 27 - 30

2021 MWISA 75th Annual Conference & Trade Show, Omaha, NE, Info at: <https://mwisa.org>.

SWMCFC and Joplin MCFC meetings will be sporadic due the COVID-19 situation. Watch for individual emails announcing meetings as they occur.



Many a genius has been slow of growth. Oaks that flourish for a thousand years do not spring up into beauty like a reed.

- George H. Lewis, 1817 – 1878

WHAT'S HAPPENING

“The Stump” website: <https://thestumpnewsletter.weebly.com>

To add or remove your subscription, update your address, change contact information or convert from the paper to the email - web version of “The Stump” contact:

Jon Skinner
Community Forester
MO Dept. of Conservation
201 W. Riviera Dr.
Joplin, MO 64804
417-629-3434 Ext. 4543
Jon.Skinner@mdc.mo.gov



Use of names of commercial products or organizations does not imply an endorsement or recommendation by the Missouri Department of Conservation