

Free Trees!

You want to plant trees in your community. You have limited or no funds for the purchase of trees. You do have volunteers or staff willing and able to plant trees. What is a community to do? Apply for and get free 3 gallon trees from Forest ReLeaf of Missouri’s Project CommuniTree program.

Forest ReLeaf of Missouri provides free trees and shrubs to community groups for planting projects through Project CommuniTree. All trees must be planted on public or non-profit properties. The trees are grown at the CommuniTree Gardens nursery in Maryland Heights, MO (St. Louis suburb) where they must be picked up.

Forest ReLeaf is reporting they have too many trees, over 13,000, on the property. They want you to apply so these plants can be utilized. A recent report shared they have the following species available on a first come, first served basis, and quantities of specific species vary:

American beautyberry	chinkapin oak	overcup oak	smooth sumac
aromatic sumac	deciduous holly	pawpaw	spicebush
arrowwood	eastern redbud	pecan	swamp white oak
bald cypress	elderberry	persimmon	American sycamore
black cherry	false indigo	pin oak	tuliptree
black chokeberry	flowering dogwood	red mulberry	vernal witchhazel
black gum	gray dogwood	redbud	water oak
black oak	hackberry	river birch	white fringetree
black walnut	hazelnut	rose mallow	white oak
blackhaw	hickory	roughleaf dogwood	wild plum
blackjack oak	Kentucky coffeetree	scarlet oak	willow oak
burr oak	nannyberry	serviceberry	witchhazel
buttonbush	ninebark	shagbark hickory	spruce
carolina buckthorn	northern red oak	shortleaf pine	
cherrybark oak	Ohio buckeye	silky dogwood	

Learn more about Project CommuniTree and watch for when applications may be submitted for the fall distribution season at: <http://moreleaf.org/plant/project-communitree/>.

PlantMoreTrees

The Missouri Community Forestry Council has a goal of tracking the planting of one million or more trees in Missouri from 2015 through 2020. Trees are planted all over the place, in communities along streets, in parks, yards, in rural plantings for wildlife, timber production, and crops like black walnuts. The question was how were they going to collect this information from individuals, private nurseries, city governments, and more.



downy serviceberry
Amelanchier arborea

Downy serviceberry is a small, deciduous tree with a mature height of 15 to 20 feet and variable width. Under planted in urban areas, downy serviceberry is excellent for lightly shaded areas. The white flowers are some of the earliest to show in the spring. The leaves may turn from yellow to red in the fall. Purple –red fruit provides excellent bird food. Several cultivars are available commercially and guarantee better fall color.



Image: MO Dept of Conservation

Range map modified from Virginia Tech Dendrology Web site - <http://dendro.cnre.vt.edu/dendrology/syllabus/factsheet.cfm?ID=9>

HomeToolsStats

20/20VISIONPLANT MORE TREES

Plant More Trees

AccountLog In

Welcome to Your Urban Forest Cloud

Welcome to **PlantMoreTrees!** Help enrich your community by planting trees, and telling us about your efforts! Sign up, add new trees, map recently planted trees, and track your stewardship activities like watering, pruning and mulching. Make your trees count!

Get Started

Learn More

Current number of trees planted:
237,339

Legend

Layer: Projects

Display by: Project Name

Showing 0 of 125 projects.

Search:

Show All Trees

Arborday2017, Kansas City region

arbor day 2015

Arborday2015, Central region

Arborday2015, Kansas City region

Arborday2015, Northeast region

Arborday2015, Northwest region

Arborday2015, Ozark region

Arborday2015, Southeast region

Arborday2015, Southwest region

Arborday2015, St. Louis region

Arborday2016, Central region

Arborday2016, Kansas City region

Arborday2016, Northeast region

Arborday2016, Northwest region

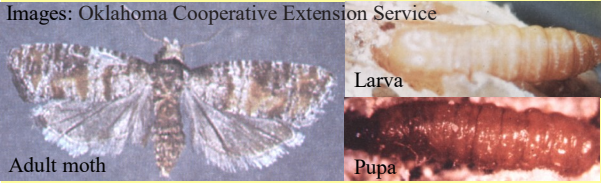
Arborday2016, Ozark region

In conjunction with Forest ReLeaf of Missouri providing the conduit, TRIM grants from the Missouri Department of Conservation, and the tech mastery of Plan-it Geo, an interactive online mapping program was created and is now available. If you have planted trees in 2015, 2016, or 2017 and as you plant more through 2020, you are being asked to record your planting efforts online with the PlantMoreTrees web application. The application is flexible enough to map individual trees or record groups of trees by yard, street, park, city, or field. Take a little time, record your trees and let others know trees are important to all of us. Record your trees at: <https://pg-cloud.com/PlantMoreTrees>

Website review - OutsideCareers.org

I keep hearing about companies and communities having difficulty finding future employees. The Tree Care Industry Association has developed this website to assist you with resources. The site has multiple videos of people in the industry. They explain what they do, why they became an arborist, and discuss career development. The site also discusses education needs of positions, and a jobs board to help find open positions. When looking for new staff or directing someone to the field, this site can help. See it at: www.outsidecareers.org.

Nantucket pine tip moth (*Rhyacionia frustrana*)



Nantucket pine tip moth is not a common pest in our area due to few pines being planted, but can be a severe pest of Austrian, Scotch, mugo, and shortleaf pines. Damage is caused by the larva feeding first on the base of needles, then the bud, and finally down the shoot. Confirmation is done by looking for the larva, pupa, and/or tunnels in the shoot. At least three generations a year occur. Treatment involves cutting off damaged tips and then utilizing a pheromone trap to detect adult moth emergence. Sprays are applied 14 days after adult peak emergence of the first generation, and 5 to 10 days after the peak emergence of the next generations. Remove and destroy all damaged tips in the fall. The larva overwinter in these damaged portions of the tree.

September 19

SWMCFC meeting, 8:30 - 10 AM, MDC SW Regional Office, Springfield, MO.

September 20

Saluting Branches, Springfield, MO, Registration and information at: www.salutingbranches.org

September 21

JMCFC meeting, 7 - 9 AM, Wildcat Glades Conservation & Audubon Center, Joplin, MO.

September 26 - 28

Trees & Utilities Conference, Kansas City, MO, Registration and information at: www.treesandutilities.org

October 3 - 4

Growing Sustainable Communities Conference, Dubuque, IA, Registration and information at: <http://www.gscdubuque.com>

October 17

SWMCFC meeting, 8:30 - 10 AM, MDC SW Regional Office, Springfield, MO.

October 26

JMCFC meeting, 7 - 9 AM, Wildcat Glades Conservation & Audubon Center, Joplin, MO.

November 13 - 14

SMA International Urban Forestry Conference and Trade Show, Tulsa, OK, Registration and information at: <https://www.arboday.org/programs/pcf/partnering-event-sma.cfm>

November 14

Alliance of Community Trees Day, Tulsa, OK, Registration and information at: <https://www.arboday.org/programs/pcf/partnering-event-actrees.cfm>

November 14

UAA Regional Pre-Conference Meeting in partnership with Arbor Day Foundation, Tulsa, OK, Registration and information at: <https://uaa.wildapricot.org/event-2613533>

November 15 - 16

Partners In Community Forestry Conference, Tulsa, OK, Registration and information at: <https://www.arboday.org/programs/pcf/>

November 18

JMCFC Pruning Workshop, 9 AM - Noon, Cunningham Park, Joplin, MO

November 21

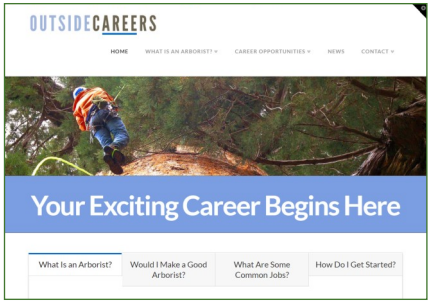
SWMCFC meeting, 8:30 - 10 AM, MDC SW Regional Office, Springfield, MO.

November 29

Missouri Green Industry Conference, St. Charles, MO, Information at: <http://mogie.org>

December 19

ISA Certified Arborist, Utility Specialist, and Municipal Specialist Exam, Springfield, MO, Registration deadline Dec. 1, Register at www.isa-arbor.com/certification/becomeCertified.



Suburbia is where the developer bulldozes out the trees, then names the streets after them.

- Bill Vaughan



WHAT'S HAPPENING

“The Stump” web site: <http://thestumpnewsletter.weebly.com>

To add or remove your subscription, update your address, change contact information or convert from the paper to the email - web version of “The Stump” contact:

Jon Skinner
Community Forester
Forestry Division
MO Dept. of Conservation
201 W. Riviera Dr., Ste. B
Joplin, MO 64804
417-629-3423
Jon.Skinner@mdc.mo.gov



Use of names of commercial products or organizations does not imply an endorsement or recommendation by the Missouri Department of Conservation