

THE STUMP

INFORMATION BY THE BOARD FOOT

SEPTEMBER 2012

KNOT THE HOLE NEWS

Emerald Ash Borer Found in KC Area

Emerald Ash Borer (EAB) is an invasive wood boring pest that kills all types of ash trees. It only affects ash and is not a threat to any other type of tree. This insect has been found in ash as little as 1 inch in diameter.

EAB is native to eastern Russia, northern China, Japan and Korea. It was first discovered in the United States in southeast Michigan in 2002. Since then it has moved throughout the Northeast and Midwest region until first being detected in Missouri in 2008. The pest has killed millions of ash trees at a significant cost to communities, business, and homeowners.



On Friday, July 20, 2012 the USDA APHIS confirmed that the adult insects found in Platte County are EAB. The find in the Kansas City metropolitan area was initially made by an observant ISA Certified Arborist who was asked to remove a tree in a homeowner's yard. The arborist notified MDC which notified the Missouri Department of Agriculture (MDA).

If during your normal day to day activities you come across an ash tree that appears ill, compare it with the information at <http://extension.missouri.edu/emeraldashborer/> to verify the symptoms are similar. If you think you have found an infested ash tree, call Jon Skinner immediately at 417-629-3423. A MDC forester will need to discuss the suspected find and may request to visit the tree.

Community Stewardship Grant Program Call For Proposals.

Missouri Department of Conservation's (MDC) Community Stewardship Grant Program aims to support conservation in Missouri communities. Eligible partners in the Southwest Region may receive funding for partner- and volunteer-based habitat improvement projects.

Applications should be relevant to the three broad goals of the Community Stewardship Grant Program, listed here in order of priority:

- (1) Provide support for terrestrial and aquatic habitat improvement, and community land stewardship
- (2) Coordinate efforts among similar organizations which share the common goal of improving urban habitats and supporting community conservation efforts, and
- (3) Engage urban residents in community conservation through volunteer efforts to improve habitat.

If your community is interested in submitting a proposal, contact Ronda Headland (ronda.headland@mdc.mo.gov, 417-866-1127 ext.150) or Jon Skinner (jon.skinner@mdc.mo.gov, 417-629-3423).

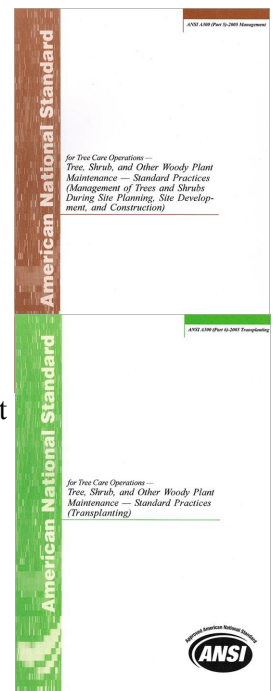
ANSI A300 Part 5 and Part 6 Revised for 2012

The American National Standards Institute (ANSI) approved major revisions of ANSI A300 (Part 5)-2012 Management of Trees and Shrubs During Site Planning, Site Development, and Construction and ANSI A300 (Part 6)-2012 Planting and Transplanting standard.

A300 (Part 5)-2012 Management of Trees and Shrubs During Site Planning, Site Development, and Construction covers nearly everything from concept to completed project for the protection and retention of existing trees on a development site.

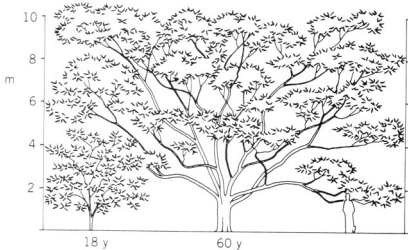
ANSI A300 (Part 6)-2012 Planting and Transplanting adds significant details about how to plant a tree. The additions incorporate details about planting depth, root flare location, girdling roots, hole size and more.

Anyone actually doing these activities or inspecting them should be very familiar with these revised standards. They may be ordered either from the ISA store (<http://www.isa-arbor.com/store/>) or TCIA store (<https://secure.tcia.org/orders/>).



Sudden Branch Drop

Unexpectedly, a large branch falls out of a tree in calm weather with no obvious reason for the failure. Why? Richard Harris provides some insight into this phenomenon. See his paper presented at the 58th Annual Conference of ISA in Louisville, Kentucky, on August 10, 1983 at: <http://artisticreeworks.com/harris.html>.



amur corktree

Phellodendron amurense

Amur corktree is a small to medium tree reaching 30 to 45 feet in height and equal to greater in width. Slow to medium growth rate with reports of 5 inches to 2 feet of growth per year on average. Specie growth habit is broad spreading with a short trunk and an open rounded crown of a few large, often horizontally arranged branches. Tolerant of varied soils from acidic to alkaline. Soil moisture requirements have a large range as well. Prefers to be in full sun. Leaves are opposite, 10 to 15 inches long with 5 to 13 leaflets that are lustrous dark green on top. Turning yellow to bronzy yellow briefly before falling off in early fall. It transplants readily with a fibrous, shallow, wide-spreading root system. Female trees should be avoided due to potential invasive nature. The three male cultivars 'His Majesty', 'Macho', and 'PNI 4551' (Shademaster®) are good selections.

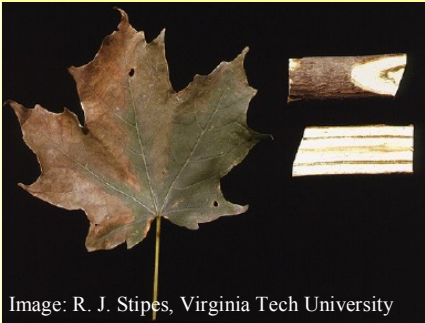
Plant illustration by Jenny M. Lyverse, from *Landscape Plants for Eastern North America*, 2nd Edition, Harrison L. Flint Author.

Web Site Review - Ash Identification

With emerald ash borer just a few hours north, it is time to refresh our memories of how to identify ash trees. Missouri has blue, green, pumpkin, and white ash in various parts of the state. Pumpkin ash is only found in the bootheel region, the other three may be found in southwest Missouri. These web sites provide basic to detailed information. Visit the Herbarium site ash page at http://www.uwgb.edu/BIODIVERSITY/herbarium/trees/Fraxinus_comparison01.htm; Michigan State University Extension ash ID publication at <http://www.emeraldashborer.info/files/E2942.pdf>; and Virginia Tech Fact Sheets at <http://dendro.cnre.vt.edu/dendrology/factsheets.cfm> - type 'Fraxinus' in the Genus field to search.



Pest Highlight - verticillium wilt



Verticillium wilt (*Verticillium albo-atrum* and *V. dahliae*) are soil borne fungi that can infect over 130 different plants through the roots. However, *V. dahliae* is more often the one infecting ornamental trees and shrubs. The fungi spreads throughout the tree through the sapwood interfering with water flow. The infection is usually worse in the roots and lower trunk. The tree reacts with leaf margin browning before whole leaf death and individual branches dying back. Colored streaks in the infected sapwood may be seen. The color

varies with specie of tree. Confirm an infection of a suspect tree with a lab diagnosis. Suspect trees may be helped, not cured, by applying ammonium sulfate fertilizer. Prune out dead to reduce chance of spread by other pests. Remove and replace severely infected trees with resistant species. See more at: <http://pubs.ext.vt.edu/450/450-619/450-619.html> and <http://www.extension.umn.edu/distribution/horticulture/DG1164.html>

September 17

ISA Certified Arborist, Utility Specialist, and Municipal Specialist Exam, Norman, OK, Registration deadline August 29, 2012, Register at www.isa-arbor.com/certification/becomeCertified/

September 18

SW MCFC meeting, MDC Regional Office Auditorium, Springfield, MO

September 28

MPRA Did You Know? Workshop, Lake Springfield Boathouse & Marina, Springfield, MO, For information visit <http://www.mopark.org/>

October 11

State MCFC meeting, MDC State Office Auditorium, Jefferson City, MO

October 16

SW MCFC meeting, MDC Regional Office Auditorium, Springfield, MO

November 8 - 10

TCIA Expo 2012, Baltimore, MD, For information visit <http://expo2012.tcia.org/>

November 14 - 15

Partners in Community Forestry Conf., Sacramento, CA, For information visit <http://www.arborday.org/shopping/pcf/2012/>

November 20

SW MCFC meeting, MDC Regional Office Auditorium, Springfield, MO

November 28—December 1

American Society of Consulting Arborists Annual Conf., San Diego, CA, For information visit <http://www.asca-consultants.org/edprograms/conference.cfm>

December 5

ISA Certified Arborist, Utility Specialist, and Municipal Specialist Exam, Springfield, MO, Registration deadline November 15, 2012, Register at www.isa-arbor.com/certification/becomeCertified/

December 15

ISA Certified Arborist, Utility Specialist, and Municipal Specialist Exam, Oklahoma City, OK, Registration deadline November 29, 2012, Register at www.isa-arbor.com/certification/becomeCertified/

A tree never hits an automobile
except in self defense.
- American Proverb

WHAT'S HAPPENING

“The Stump” web site:
<http://thestumpnewsletter.weebly.com>

To add or remove your subscription, update your address, change contact information or convert from the paper to the email - web version of “The Stump” contact:

Jon Skinner
Urban Forester
Forestry Division
MO Dept. of Conservation
201 W. Riviera Dr., Ste. B
Joplin, MO 64804
417-629-3423
Jon.Skinner@mdc.mo.gov



Use of names of commercial products or organizations does not imply an endorsement or recommendation by the Missouri Department of Conservation