



THE STUMP

INFORMATION BY THE BOARD FOOT

SEPTEMBER 2003

KNOT THE HOLE NEWS

Free Trees!

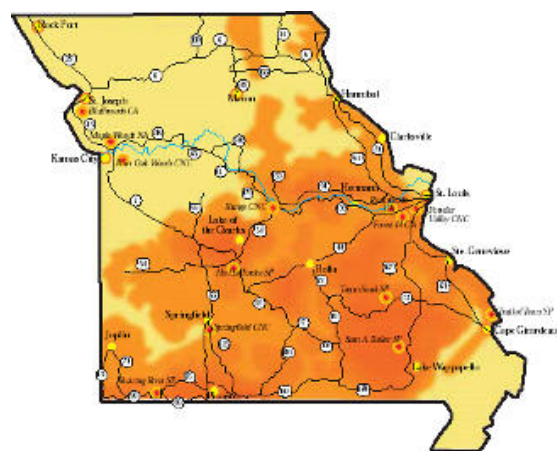
That's correct - Free Trees! In partnership with the National Tree Trust, Ameren, Lambert-St. Louis International Airport, and MDC, Forest Releaf of Missouri obtains bareroot seedlings, pots and grows them for one year, then distributes them to any organization agreeing to the terms of planting on public or non-profit property, maintaining trees, and reporting back on the condition and survival of the trees.

The fall distribution was announced the second week of August and will continue as long trees are available. Several communities were contacted by mail at this earlier time. Species selection is mostly native trees, all suitable for southwest Missouri. If you are interested in asking for trees, contact Forest Releaf of Missouri at: 1-888-473-5323, www.moreleaf.org, or moreleaf@anet-stl.com.

Fall Color

Leaves will be changing color soon. Sights of yellow, orange, red, and brown will appear replacing the green of spring and summer.

Leaves are green due to the chlorophyll contained in the leaves cells. Chlorophyll absorbs sunlight and uses that energy to convert water and carbon dioxide into sugars and starches, food for the tree. As the days become shorter and cooler, less chlorophyll is produced by the tree and the carotenoids, that were always present, become visible. They guarantee the yellows and oranges we see each fall. The brilliant reds and purples we see are not present in the tree leaves during the summer, but are created when sugars created during warm, sunny days are trapped in the leaves during cool nights chemically creating the red anthocyanins. If either the cool nights or sunny days is missing, the anthocyanins and red color will not form. Other factors that can affect fall color is drought where the tree drops leaves before they change color or an early freeze that kills the leaves before they can change.



baldcypress

Taxodium distichum

Baldcypress is a large, deciduous tree with a mature height of 50 to 70 feet and 20 to 30 feet wide. This unique conifer loses its needles annually. It grows best in wet areas, but can survive on dry, compacted soils. The cones are round and golf ball sized when fully developed. Flowers are not showy. Fall color is yellow to golden brown. Some cultivars of note are 'Apache Chief' which has a wider than normal crown and 'Pendens' which has a drooping habit.



Plant illustration by Dale Larison, Missouri Department of Conservation

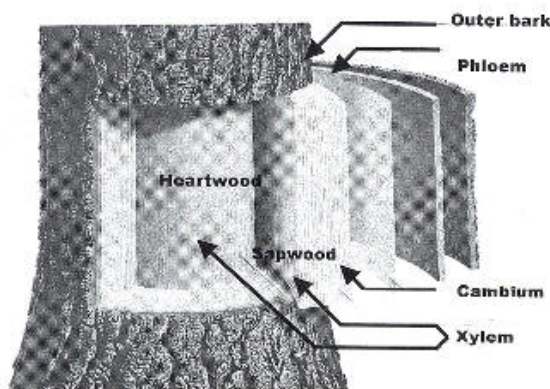
Range map modified from USDA Forest Service Silvics of North America Web site - www.na.fs.fed.us/spfo/pubs/silvics_manual/Volume_1/taxodium/distichum.htm

There are many scenic drives and walks in Missouri. Take a tour and enjoy the fall colors. If you want suggestions, MDC offices have the free publication "Fall Colors of Missouri" available or you may download the Adobe Acrobat file at:

www.conservation.state.mo.us/documents/nathis/seasons/fall/brochure.pdf

Branching Out Workshop Series for Public Employees

Branching Out is a workshop series for public employees and volunteers. The three workshops will provide individuals responsible for public tree care basic knowledge to manage their public trees.



The first workshop is October 29, 2003 covering tree pruning, tree biology, hiring arborists, and introduce the Tree City USA Program and the International Society of Arboriculture. The second workshop is December 17, 2003 covering tree roots, hazard tree identification, and construction around trees. The third workshop is February 25, 2004 covering tree selection and planting, planting location ideas, and insect and disease diagnoses and management.

Each workshop will be held in the Jasper County Youth Fair Building in Municipal Park, Carthage. Registration is required and a \$10 fee is charged to cover lunch, building rental, snacks, and materials. If you do not receive a flyer announcing the first workshop and want to attend, please contact Jon Skinner at 417-629-3423 or Jon.Skinner@mdc.mo.us

Email Address Change

MDC is changing the way email addresses are currently to the new all State of Missouri government standard. On September 15, Jon Skinner's new email address will be: Jon.Skinner@mdc.mo.gov. Please update your address book. My current and soon to be old email address listed in this and older issues still works.

Web Site Review

Human-Environment Research Laboratory (HERL) was founded to study the relationship between people and the physical environment. The mission of the Lab is to generate information about human-environment relationships to guide policy, planning, and design of environments. Research results from many studies is available on this site including Canopy & Crime, Girls & Greenery, Kids & Concentration, Neighbors & Nature, Plants & Poverty, and Vegetation & Violence. Learn more about these studies at: www.herl.uiuc.edu

Today's mighty oak is just yesterday's nut that held it's ground!
- anonymous

UNHARVESTED



A scent of ripeness from over a wall.
And come to leave the routine road
And look for what had made me stall,
There sure enough was an apple tree
That had eased itself of its summer load,
And of all but its trivial foliage free,
Now breathed as light as a lady's fan.
For there there had been an apple fall
As complete as the apple had given man.
The ground was one circle of solid red.

May something go always unharvested!
May much stay out of our stated plan,
Apples or something forgotten and left,
So smelling their sweetness would be no theft.

-- Robert Frost

September 17 - 20

Engineering Green: 2003 National Urban Forest Conference, San Antonio, TX Contact: American Forests, www.americanforests.org/conference/

September 29 - October 1

Building for Greener Communities National Conference, Nebraska City, NE Contact: National Arbor Day Foundation, 402-474-5655, conferences@arborday.org, www.arborday.org/programs/conferencelist.html

October 7 - 8

ArborMaster Training, Level I Climbing Skills Module, Muskogee, OK Contact: ArborMaster, 860-429-5028, Info@ArborMaster.com, www.ArborMaster.com

October 9

Missouri Community Forestry Council Meeting, Jefferson City, MO Contact: Justine Gartner, 573-751-4115, gartnj@mdc.state.mo.us

October 9 - 10

ArborMaster Training, Level I Precision Felling Module, Muskogee, OK Contact: ArborMaster, 860-429-5028, Info@ArborMaster.com, www.ArborMaster.com

October 21

Proper Pruning: The Art and Science Workshop, Pierce City, MO Contact: Jon Skinner, 417-629-3423, Jon.Skinner@mdc.mo.us

October 23

Proper Pruning: The Art and Science Workshop, Joplin, MO Contact: Jon Skinner, 417-629-3423, Jon.Skinner@mdc.mo.us

October 29

Branching Out: Public Employee tree Care Short Course - Part I, Carthage, MO Contact: Jon Skinner, 417-629-3423, Jon.Skinner@mdc.mo.us

November 6

Proper Pruning: The Art and Science Workshop, Carthage, MO Contact: Jon Skinner, 417-629-3423, Jon.Skinner@mdc.mo.us

November 6 - 8

Green Industry Expo, St. Louis, MO Contact: GIE, 888-303-3685, www.gieonline.com, info@gieonline.com

November 10

Proper Pruning: The Art and Science Workshop, Stockton, MO Contact: Jon Skinner, 417-629-3423, Jon.Skinner@mdc.mo.us

November 13 - 15

TCI EXPO 2003, Baltimore, MD Contact: TCIA, 603-314-5380, www.TreeCareIndustry.org, TCIA@treecareindustry.org

November 19

ISA Certification Exam, St. Charles, MO Contact: ISA, 217-355-9411, www.isa-arbor.org, application deadline - November 3

November 20

Storm Preparedness and Damage Workshop, Kirkwood, MO Contact: Forestkeepers, 888-473-5323, www.forestkeepers.org

REFLECTION

A seed hidden in the heart of an apple is an orchard invisible.
- A Welsh proverb

WHAT'S HAPPENING

"The Stump" web Site:
www.geocities.com/rocksandtrees/thestump/
To add or remove your subscription, update your address, change contact information, or convert from the paper to the email - web version of "The Stump", contact:

Jon Skinner
Urban Forester
Forestry Division
MO Dept. of Conservation
705 Illinois Ave., Ste. 6b
Joplin, MO 64801-5065
417-629-3423
Jon.Skinner@mdc.mo.us



Use of names of commercial products or organizations does not imply an endorsement or recommendation by the Missouri Department of Conservation