

# THE STUMP

INFORMATION BY THE BOARD FOOT

FEBRUARY 2019

KNOT THE HOLE NEWS

## ISA Study Guide Chapters 9, 15, 16 Training

Are you interested in becoming an International Society of Arboriculture Certified Arborist, reviewing some of the material needed by arborist, or learning for your own benefit? Regardless of reason, this training is a benefit to you and those you work for. Chapters 9, 15, and 16 of the ISA Certified Arborists Study Guide will be presented. This will cover information on Tree Support and Lightning Protection, Tree Worker Safety, and Climbing and Working in Trees. These topics will be presented by a working ISA Certified Arborist. His expertise is beneficial in learning these subjects. Six ISA CEU's and SAF CFE's are approved.

Both days will have identical workshops with only the location being different.



## Registration is required for these workshops.

February 12, 2019  
9 AM - 4:15 PM  
Walter Woods Conservation Area  
5265 Eland Rd., Joplin, MO

Call 417-629-3434 Extn. 4543 or  
email [jon.skinner@mdc.mo.gov](mailto:jon.skinner@mdc.mo.gov)

February 14, 2019  
9 AM - 4:15 PM  
MDC Southwest Regional Office  
2630 N. Mayfair Ave., Springfield, MO

Call 417-895-6880 or  
email [Cindy.Garner@mdc.mo.gov](mailto:Cindy.Garner@mdc.mo.gov)

## Tree Line USA - Benchmark for Good Tree Care

Tree Line USA is an recognition program for Electric Utilities that meet the standards of:

- Standard 1. Quality Tree Care
- Standard 2. Annual Worker Training
- Standard 3. Tree Planting and Public Education
- Standard 4. Tree Based Energy Conservation Program
- Standard 5. An Arbor Day Celebration.



Twelve utilities in Missouri earned Tree Line USA recognition in 2017 including Carthage Water and Electric, City Utilities of Springfield, and Liberty Utilities-Empire District in Southwest Missouri. The variety of the utilities that earn the recognition indicates the



standards are achievable by all utilities. Yes, you may need to make some changes to the process you use involving trees, but the long term payoff will make up go the initial stress. I am available to assist you with making strides toward Tree Line USA, just contact me. To see the full details of Tree Line USA, visit their web site at:

<https://www.arboday.org/programs/treelineusa/>

## Tree Risk Video Training Available Online

Whether or not if you have a formal tree program for your community trees, you do have risk associated with those trees. Knowing what this risk is and how to reduce it will benefit your community.

Thanks to a Landscape Scale Restoration grant, the Nebraska Forest Service held and recorded a Tree Risk Assessment and Management workshop. The workshop was developed to assist those who manage trees in their community to better understand potential risk, how to address it, and how to proactively manage the community forest.

The featured speaker is Mark Duntemann, owner of Natural-Path Urban Forestry Consultants.

Major concepts covered during the workshop included: Concepts of Risk Management; Defining what is "Reasonable and Practical" in the eyes of the law; Risk Analysis – an outdoor session on identifying tree defects and measuring the risk they present; Defining Risk Reduction Goals, Refining Operations to Identify and Mitigate High-risk Trees; and Long Term Policies and Management Implications.



The workshop recordings are divided into 8 parts. The videos are available for free to watch by anyone on the University of Nebraska - Lincoln Extension's MediaHub site for the Nebraska Forest Service. As of 1/28/2019, the videos are listed on two separate pages with the titles starting with "Tree Risk Assessment" and "Tree Risk Management". View them all at: <https://mediahub.unl.edu/channels/18735>.



**Fragrant sumac**  
*Rhus aromatica*

Fragrant sumac is a small, deciduous shrub with a mature height of 5 to 7 feet and 6 to 10 feet wide. An excellent shrub for wildlife, it is also very useful for landscaping. It has yellow flowers in the spring. The red drupes (berries) are attractive and provide good wildlife food. The leaves have the potential to turn orange to red to purple in the fall, especially on "lighter" soils. Several cultivars are available with "Gro-low" and "Konza" staying under 2 feet high making them good building foundation plants.

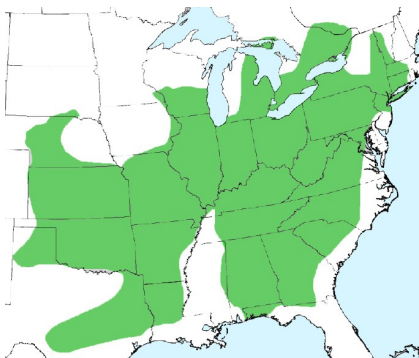


Image: MDC

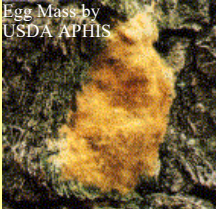
Range map modified Virginia Tech  
Dendrology fragrant sumac factsheet:  
<http://dendro.cnre.vt.edu/dendrology/syllabus/factsheet.cfm?ID=447>

# Web Review - i-Tree Design

i-Tree Design allows anyone to make a simple estimation of the benefits provided by an individual or group of trees. With inputs of location, species, tree size, and condition, users will receive an understanding of tree benefits related to greenhouse gas mitigation, air quality improvements, and stormwater interception. With the additional step of drawing a building footprint – and virtually "planting" or placing a tree – tree effects on building energy use can be evaluated. This is a useful tool for estimation AND education of an individual or group. Try it out at: <http://design.itreetools.org/>

## Gypsy moth (*Lymantria dispar*)

Gypsy moth infestations can defoliate trees, especially oak. Found consistently in Iowa and Illinois along the Mississippi river. There is concern it may move quickly south along river into Missouri. Egg masses are light tan, and the eggs inside are black and pelletlike. Each mass may contain 400-600 eggs. The larval stage (caterpillar) is hairy, and a mature larva is 50-65 mm long with a yellow and black head. Behind the head on the thorax and abdomen are five pairs of blue spots (tubercles) followed by six pairs of brick red spots. The pupal stage is dark reddish-brown and is held in place to some object by small strands of silk. Male moths are dark buff and fly readily during the day. Females are white with black, wavy markings; they have robust abdomens and do not fly, and their wingspan can reach 5 cm. Every year pheromone traps are set throughout Missouri to try to find the adult male moths. A few are found every year, but a permanent population have not been established. More information is available on various websites.



### February 2

ISA Certified Arborist, Utility Specialist, and Municipal Specialist Exam, Kirkwood, MO, Registration deadline Jan. 17, Register at [www.isa-arbor.com/certification/becomeCertified](http://www.isa-arbor.com/certification/becomeCertified).

### February 6 - 8

73rd MW-ISA Conference and Trade Show, Hilton St. Louis Frontenac - St. Louis, MO, Information and Registration at: <https://www.mwisa.org/conference-and-trade-show>.

### February 11 - 15

TCIA Winter Management Conference 2019, St. Kitts Marriott Resort and Royal Beach Casino, Information and Registration at: <https://wmc.tcia.org>.

### February 12

ISA Study Guide Chapters 9, 15, 16 Training, 9 AM - 4:15 PM, Walter Woods Conservation Area, Joplin, MO, Registration Required 417-629-3434 or email [jon.skinner@mdc.mo.gov](mailto:jon.skinner@mdc.mo.gov).

### February 14

ISA Study Guide Chapters 9, 15, 16 Training, 9 AM - 4:15 PM, MDC SW Regional Office, Springfield, MO, Registration Required 417-629-3434 or email [cindy.garner@mdc.mo.gov](mailto:cindy.garner@mdc.mo.gov).

### February 19

SWMCFC meeting, 8:30 - 10 AM, MDC SW Regional Office, Springfield, MO.

### February 19 - 21

63rd Annual ISU Shade Tree Short Course & INLA Trade Show, Ames, IA, Information at: <https://iowanla.org/annual-inla-trade-show/>.

### February 21 - 23

Tree Risk Assessment Qualification Course, Oklahoma City, OK, Information at: [www.mwisa.org/traq-classes](http://www.mwisa.org/traq-classes).

### February 28

JMCFC meeting, 7 - 9 AM, Walter Woods Conservation Area, Joplin, MO.

### March 12

Tree Risk Assessment Qualification Renewal Course, St. Louis, MO, Information at: [www.mwisa.org/traq-classes](http://www.mwisa.org/traq-classes).

### March 13 - 15

Missouri Community Forestry Council Annual Conference, St. Louis, MO, Early Bird deadline is February 18. Information at: [www.mcfconference.com](http://www.mcfconference.com).

### March 19

SWMCFC meeting, 8:30 - 10 AM, MDC SW Regional Office, Springfield, MO.

### March 28

JMCFC meeting, 7 - 9 AM, Walter Woods Conservation Area, Joplin, MO.



Character is like a tree and reputation like a shadow.

The shadow is what we think of it; the tree is the real thing.

- Abraham Lincoln

WHAT'S HAPPENING

“The Stump” web site: <https://thestumpnewsletter.weebly.com>

To add or remove your subscription, update your address, change contact information or convert from the paper to the email - web version of “The Stump” contact:

Jon Skinner  
Community Forester  
Forestry Division  
MO Dept. of Conservation  
201 W. Riviera Dr.  
Joplin, MO 64804  
417-629-3434  
[Jon.Skinner@mdc.mo.gov](mailto:Jon.Skinner@mdc.mo.gov)



Use of names of commercial products or organizations does not imply an endorsement or recommendation by the Missouri Department of Conservation