

THE STUMP

INFORMATION BY THE BOARD FOOT

DECEMBER 2017

KNOT THE HOLE NEWS

Insect and Disease Update Seminar

It has been another eventful year of tree pest calls. Every year we see some of the same items, some occasional visitors, and a new one or two attacking the trees we care for. The Missouri Department of Conservation Forest Health Staff will provide their annual update on January 9, 2018 in Springfield and January 10, 2018 in Joplin. You may sign up for either, but space is limited. Register by calling or emailing for the appropriate session.



January 9, 2018
1:00 – 4:00 PM

Springfield Nature Center
4601 S. Nature Center Way
Springfield, MO
Call: 417-895-6880

January 10, 2018
8:30 – 11:30 AM

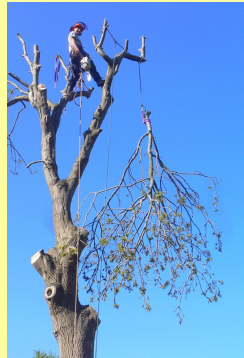
Wildcat Glades Conservation
and Audubon Center
201 W. Riviera Dr.
Joplin, MO
Call: 417-629-3423
Email: jon.skinner@mdc.mo.gov

Rigging Classes

Trees are heavy. Just letting the branch drop is not always an option while working around houses and other objects. Rigging allows the safe lowering of a branch while not lifting the person holding the lowering line off the ground. Two identical sessions on rigging will be offered in Joplin and Springfield. Pre-Class study is required. You may sign up for either, but space is limited. Register by calling or emailing for the appropriate session.

January 24, 2018
9:00 AM – 4:00 PM

MDC SW Regional Office
2630 N. Mayfair Ave.
Springfield, MO
Call: 417-895-6880



January 25, 2018
9:00 AM – 4:00 PM

Wildcat Glades Conservation
and Audubon Center
201 W. Riviera Dr.
Joplin, MO
Call: 417-629-3423
Email: jon.skinner@mdc.mo.gov



baldcypress

Taxodium distichum

Baldcypress is a large, deciduous tree with a mature height of 50 to 70 feet and 20 to 30 feet wide. This unique conifer loses its needles annually. It grows best in wet areas, but can survive on dry, compacted soils. If grown in a wet area, the tree will develop “cypress knees” but not on dry sites. The cones are round and golf ball sized when fully developed. Flowers are not showy and look like green caterpillars drooping from the bare branches in the spring. Fall color is yellow to golden brown. Some cultivars of note are ‘Apache Chief’ which has a wider than normal crown and ‘Pendens’ which has a drooping habit.

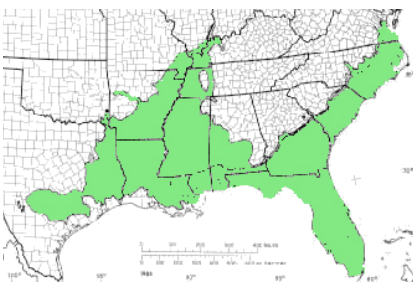


Image: MO Dept of Conservation

Range map modified from USDA Forest Service Silvics of North America Web site - www.na.fs.fed.us/spfo/pubs/silvics_manual/Volume_1/taxodium/distichum.htm

Chainsaw Safety Class for Tree Care Workers



With assistance from the Tree Care Industry Association’s (TCIA) Arborist Safety Training Institute (ASTI), the Missouri Community Forestry Council, and Missouri Department of Conservation, a free Chainsaw Safety class will be offered on February 14, 2018. The class is for arborist of all experience levels and specifically targeted at individuals working

for tree care companies. City Staff may register, but will be placed on a waiting list until closer to the training date.

Safety is how you and fellow arborists go home daily. Refreshing your knowledge about how to use a chainsaw is always beneficial to help that daily goal happen. Reduce the likelihood of injury to you or your coworker by attending this training.

The class will be at the Wildcat Glades Conservation & Audubon Center, 201 W. Riviera Dr., Joplin, MO on February 14, 2018, 8 AM to Noon.

Registration is required due to limited class size. Register by calling 417-629-3423 or email jon.skinner@mdc.mo.gov.

Missouri Community Forestry Council Annual Conference

The Missouri Community Forestry Council Annual Conference theme this year is “The Dollars & Sense of Trees.” The conference offers an annual opportunity for individuals interested in trees to learn from regional and national speakers on various topics related to urban forestry. This year’s conference will be held in Columbia at the Courtyard by Marriott on March 13 - 15, 2018. The local planning committee has prepared a great agenda for us to learn and share our experiences with each other. Watch the MCFC website for more information, registration, and hotel details at www.mocommunitytrees.org.



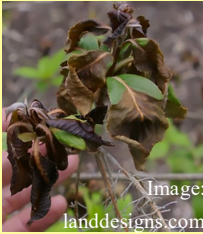
Website review - Urban Forestry Today

Looking for ISA CEU's? Have trouble getting to trainings during the day? Urban Forestry Today offers pre-recorded webinars for CEU credit. The CEU code is embeded in the video for post-approval submission. What is even better, you learn things you can use as the webinars focus on daily practice needs of arborists. The site is hosted by the University of Massachusetts Extension Forester. See it at: <http://www.urbanforestrytoday.org>.

Freeze Damage



In late October, we had several nights of hard freeze. This had a dramatic effect on fall color by stopping many trees from doing any more photosynthesis. More dramatically was the damage showing up as wilted, browning leaves on many plants. This occurred due to the warm fall and few cool nights. The trees did not harden off early to prepare for the freeze event. Does this mean trees will have a problem next spring? Probably not. Most were near senescing the leaves but a few were caught off guard. The damage was primarily aesthetic and finished them off for the season. A similar freeze in the spring would have been very damaging since the plants had expended all of that energy to grow them.



December 19

SWMCFC meeting, 8:30 - 10 AM, MDC SW Regional Office, Springfield, MO.

December 19

ISA Certified Arborist, Utility Specialist, and Municipal Specialist Exam, Springfield, MO, Registration deadline Dec. 1, Register at www.isa-arbor.com/certification/becomeCertified.

January 9

Insect & Disease Update Seminar, 1 - 4 PM, Springfield Conservation & Nature Center, Springfield, MO, Registration required. Call 417-895-6880.

January 10

Insect & Disease Update Seminar, 8:30 - 11:30 AM, Wildcat Glades Conservation & Audubon Center, Joplin, MO, Registration required. Call 417-629-3423.

January 10 - 12

KAA Shadetree Conference, Topeka, KS, Registration and information at: www.kansasarborist.com/shadetree-conference.html.

January 16

SWMCFC meeting, 8:30 - 10 AM, MDC SW Regional Office, Springfield, MO.

January 17 - 19

The Western, Kansas City, MO, Registration and information at: www.wnla.org/western.

January 24

Rigging Class, 9 AM - 4 PM, MDC SW Regional Office, 2630 N. Mayfair Ave., Springfield, MO, Registration required. Call 417-895-6880.

January 25

Rigging Class, 9 AM - 4 PM, Wildcat Glades Conservation & Audubon Center, Joplin, MO, Registration required. Call 417-629-3423.

January 31

Midwestern ISA Conference, Overland Park, KS, Registration and information at: www.mwisa.org/conference-and-trade-show.

February 4 - 8

TCIA Winter Management Conference, Maui, HI, Registration and information at: <https://tcia.org/TCIA/EVENTS/WMC/TCIA/EVENTS/WMC/WMC.aspx>.

February 14

Chainsaw Safety Class for Tree Care Workers, 8 AM - Noon, Wildcat Glades Conservation & Audubon Center, Joplin, MO, Registration required. Call 417-629-3423.

February 20

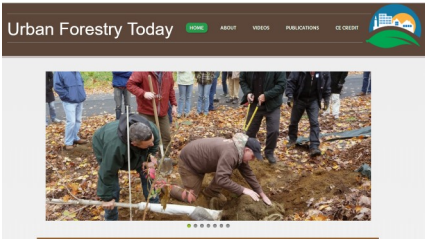
SWMCFC meeting, 8:30 - 10 AM, MDC SW Regional Office, Springfield, MO.

February 22

JMCFC meeting, 7 - 9 AM, Wildcat Glades Conservation & Audubon Center, Joplin, MO.

March 13 - 15

MCFC Conference: The Dollars & Sense of Trees, Columbia, MO, Registration and information at: www.mocommunitytrees.com/mcfcannualconference.html.



A monk asked Joshu, "What is the meaning of Bodidharma's coming to China?" Joshu said, "The oak tree in the garden."

A monk asked Zhaozhou, "What is the living meaning of Zen?." Zhaozhou said, "The cypress tree in the yard."


- Case 37 from the Mumonkan (Wumenguan), A Traditional Collection of Zen Koan
Joshu, Chao-chou, Zhaozhou' are different spellings of the name of a Chinese Chan (Zen) Teacher

WHAT'S HAPPENING

“The Stump” web site:
<http://thestumpnewsletter.weebly.com>

To add or remove your subscription, update your address, change contact information or convert from the paper to the email - web version of “The Stump” contact:

Jon Skinner
Community Forester
Forestry Division
MO Dept. of Conservation
201 W. Riviera Dr., Ste. B
Joplin, MO 64804
417-629-3423
Jon.Skinner@mdc.mo.gov



Use of names of commercial products or organizations does not imply an endorsement or recommendation by the Missouri Department of Conservation