

# THE STUMP

INFORMATION BY THE BOARD FOOT

DECEMBER 2015

KNOT THE HOLE NEWS



**white fringetree**  
*Chionanthus virginicus*

A small tree to large shrub, white fringetree is well suited to southwest Missouri. Ranging from 12 feet to 30 feet tall and often wider than tall. White flower panicles are showy, more so on male plants. Leaves are single and lance shaped. Fall color ranges from yellow to brown. Grows well in full sun to light shade. Prefers deep, moist, fertile, acid soils, but adapts well to urban sites. Cultivars of note include: 'Emerald Knight' for upright habit and long dark green glossy leaves; 'Spring Fleecing' for shiny, narrow leaf, heavily flowered male clone. Emerald ash borer has been reported to attack this plant by researchers in Ohio.



Plant image courtesy Jon Skinner  
Range map from Virginia Tech Dendrology  
<http://dendro.cnre.vt.edu/dendrology/>

## 2016 MCFC Conference

The Missouri Community Forestry Council will be holding its 2016 Annual Conference on March 8 - 10 in St. Joseph, Missouri. The Conference theme is "Building Community with Trees." This conference offers information for tree boards, city planners, arborists, medical professionals, and more.

The event is being held in the Downtown Riverfront Hotel & Conference Center. A block of reserved double rooms are available for \$83 + tax.

Some of the topics and speakers are:

- Pete Smith with the Arbor Day Foundation will talk about 40 years of Tree City USA, how things have changed;
- Arbor Day Activities organized for youth;
- Eric Berg with the Nebraska Forest Service will talk about the role of Tree Boards (what they're doing and what they should be doing);
- Kathleen Wolf, Professor & Researcher, will talk about trees and economic development, and trees and health in two separate sessions;
- Representatives from the City of Liberty will do several sessions on trees in the planning process, trees & public works; and
- The Mid-America Regional Council will do a session on "complete trees."

Many of these sessions are great as stand alone programs, but being packaged into one event makes this a truly valuable conference.

A Tuesday evening reception will be held at the St. Joseph Museums, with Natural History, Black Archives, and the Psychiatric Museum open for tours/viewing.

More information and registration details will be available soon on the MCFC website ([www.mocommunitytrees.org](http://www.mocommunitytrees.org)). The early bird registration fee is \$163. Multiple ISA CEU's and SAF CFE's are anticipated.



## Sidewalks and Trees: They Can Coexist

Many communities are or considering replacing old sidewalks or installing new ones. These are great amenities for people. Unfortunately, if good planning is not done before and followed up with great implementation, these sidewalks will be detrimental to trees for decades reducing the benefits of the trees there or those to be planted were to provide.

### Casey Trees



Trees require adequate rooting space and surface area to grow to their potential. If sidewalks are not installed with this in mind, trees suffer and often sidewalks may be damaged. The trees growth, and potential size is predictable. With this knowledge, sidewalks can be designed and installed to allow trees to coexist.

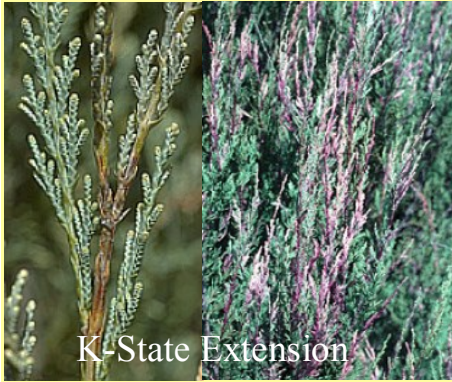
Strategies for sidewalks near trees varies with the issue. In highly paved areas like downtowns, installation of structural soil or elevated sidewalks on a structural framework provide adequate rooting space. These designs also may be helpful for control of stormwater. In neighborhoods where there is space between a curb and sidewalk, this space needs to be wide enough to allow for the trees desired for the area. Some communities restrict tree planting in these areas if it is deemed too narrow. Large trees like oaks often need at least 8 feet between the curb and sidewalk to reduce the likelihood of a conflict. Small trees like redbud only need four feet. Sidewalks should also be designed with tree roots in mind. Sidewalks should never be placed directly on compacted soil, but have a good rock base. A rock base of six inches of 0.75 inch angular gravel with no fines compacted to 95% proctor density will provide a base less likely to encourage root growth. Roots would tend to grow under the base. The concrete itself should be reinforced and six inches thick. If not enough space between a curb and sidewalk is available, move the sidewalk adjacent to the curb to allow tree planting behind the sidewalk. Sidewalks may need to be made a little wider to allow for pedestrian comfort next to the street. More strategies exist. Contact Jon Skinner for assistance at: 417-629-3423, [jon.skinner@mdc.mo.gov](mailto:jon.skinner@mdc.mo.gov).



## Web Review - GIWiz (Green Infrastructure Wizard)

Trees are an important part of green infrastructure. Finding how to utilize trees is sometimes hard to find. GIWiz provides access to a repository of EPA-sourced Green Infrastructure tools and resources designed to support and promote sustainable water management and community planning decisions including using trees. The site provides several ways to find resources with different search parameters. Try this resource at: <http://cfpub.epa.gov/giwiz/>

### Pest Highlight - Kabatina Tip Blight of Juniper



Kabatina (*Kabatina juniper*), affects junipers. Infection is believed to occur in the fall through tissue injured by insects or mechanical damage on year old tissue. Symptoms occur in late February and March. The foliage turns yellow to brown with ash gray lesions. Infected tissue falls off later in the spring/summer. There is no chemical control for this fungus. Prune off and destroy infected needles, reduce mechanical damage to plant in summer and fall. Plant resistant varieties when possible in areas with good air circulation. Do not spray water on top of plant to irrigate, especially at night, to reduce moist conditions needed for fungus.

#### December 2

ISA Certified Arborist, Utility Specialist, and Municipal Specialist Exam, Springfield, MO, Registration deadline Nov. 12, 2015, Register at [www.isa-arbor.com/certification/becomeCertified/](http://www.isa-arbor.com/certification/becomeCertified/)

#### December 10

State MCFC meeting, 10 AM - 3 PM, Jefferson City, MO

#### January 13-15

Kansas Arborists Association 61th Annual Shade Tree Conference, Ramada Inn, Topeka, KS, Information and Registration at: [www.kansasarborist.com/shadetree.aspx](http://www.kansasarborist.com/shadetree.aspx)

#### January 21-22

The Western, Crown Center Exhibit Hall, Kansas City, MO, Information and Registration at: [www.wnla.org/content.asp?contentid=135](http://www.wnla.org/content.asp?contentid=135)

#### January 28

JMCFC meeting, 7 - 9 AM, Wildcat Glades Conservation & Audubon Center, Joplin, MO

#### January 30

ISA Certified Arborist, Utility Specialist, and Municipal Specialist Exam, Kirkwood, MO, Registration deadline Jan. 14, 2016, Register at [www.isa-arbor.com/certification/becomeCertified/](http://www.isa-arbor.com/certification/becomeCertified/)

#### February 3-5

Midwestern Chapter - ISA Annual Conference and Trade Show, Harrah's, North Kansas City, MO, Information and Registration at: [www.mwisa.org/conference-and-trade-show](http://www.mwisa.org/conference-and-trade-show)

#### February 7-11

TCIA Winter Management Conference, Grand Cayman, Information and Registration at: <http://tcia.org/events/wmc-2016>

#### February 10

ISA Certified Arborist, Utility Specialist, and Municipal Specialist Exam, Hulbert, OK, Registration deadline Jan. 25, 2016, Register at [www.isa-arbor.com/certification/becomeCertified/](http://www.isa-arbor.com/certification/becomeCertified/)

#### February 7-11

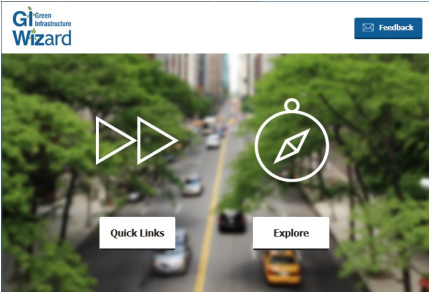
Municipal Foresters Institute, Shepherdstown, WV, Information and Registration at: [www.urban-forestry.com/index.php?option=com\\_content&view=article&id=69:MFI-2016&catid=19:site-content&Itemid=100](http://www.urban-forestry.com/index.php?option=com_content&view=article&id=69:MFI-2016&catid=19:site-content&Itemid=100)

#### February 25

JMCFC meeting, 7 - 9 AM, Wildcat Glades Conservation & Audubon Center, Joplin, MO

#### March 8-10

Missouri Community Forestry Council Annual Conference, St. Joseph, MO, Information and Registration soon at: [www.mocommunitytrees.org](http://www.mocommunitytrees.org)



Trees outstrip most people in the extent and depth of their work for the public good.  
~Sara Ebenreck,  
American Forests

## WHAT'S HAPPENING

“The Stump” web site:  
<http://thestumpnewsletter.weebly.com>

To add or remove your subscription, update your address, change contact information or convert from the paper to the email - web version of “The Stump” contact:

Jon Skinner  
Community Forester  
Forestry Division  
MO Dept. of Conservation  
201 W. Riviera Dr., Ste. B  
Joplin, MO 64804  
417-629-3423  
[Jon.Skinner@mdc.mo.gov](mailto:Jon.Skinner@mdc.mo.gov)



Use of names of commercial products or organizations does not imply an endorsement or recommendation by the Missouri Department of Conservation