

THE STUMP

INFORMATION BY THE BOARD FOOT

DECEMBER 2010

KNOT THE HOLE NEWS

Missouri Community Forestry Council Annual Conference

This years MCFC conference is concentrating on the broader topic of the urban environment. MCFC, while the main focus of the group is trees, recognizes and encourages utilization and maintenance of all natural resources to benefit a community. The conference



will be held at Truman State University in Kirksville, MO during March 1-3, 2011.

Come learn about my friends in Kirksville, MO.

Interaction with this group develops strong bonds with knowledgeable specialists across the state. A mix of concerned citizens, professional arborists, urban forestry consultants, professional city and state agency staff, and MDC foresters usually are present.

Presentations include long-term monitoring of "old-growth" urban forest, i-Tree ECO, mapping canopy cover, Columbia Aquatic Restoration Project, urban grassland management, storm water management, and others. Up to 15 ISA CEU's and SAF CFE's are anticipated.

Exhibitors and sponsors are encouraged to participate and register early. Information on booth space and sponsorship levels is available on the MCFC web site's Conference 2011 page.

Student scholarships are available. If you know a student interested in a career in urban forestry, arboriculture, or horticulture, please let them know about this opportunity.

Everyone is encouraged to attend this conference. **Early Bird registration of \$150 is due February 1.** Registration materials will be available on MCFC's Conference 2011 web page at: www.mocommunitytrees.com/conference2011.html.

Tree Appraisal Workshop

What is my tree worth? I get this question many times a month. I am also not able to provide that service to landowners or communities. I refer these questions to the few consulting arborists known to offer a tree appraisal service.

Why do people ask for this service? Many times it is due to an incident that damaged the tree and an insurance company is attempting to make a settlement. Sometimes it is to challenge appraisals for road right-of-way purchases or damages caused by a wildfire. Regardless of the reason, assigning a value to the tree(s) is often more complex than how determining the value of lumber that can be made from it.

This workshop is designed to provide you with the skills to start determining value of trees. Topics to be covered include: How does size, species, condition, and location factors influence tree value?; Council of Tree and Landscape Appraisers (CTLA) Replacement Cost Method; CTLA Trunk Formula Method; Technical writing basics; and Expert witness preparation. All skills will be practiced by going outside and evaluating actual trees.

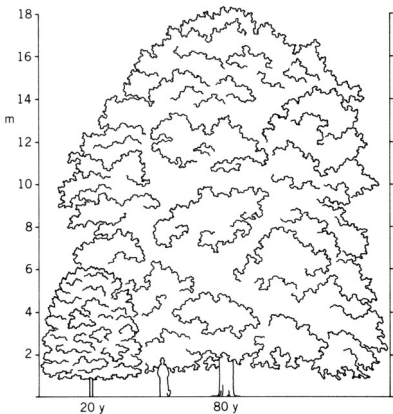
The program will be offered in two separate and identical sessions on January 24, 2011. A maximum of 20 people will be allowed in each session. The first sessions will run from 8 AM to Noon followed by the second session from 1 to 5 PM. You may register for a session by calling 417-629-3423 or emailing jon.skinner@mdc.mo.gov. An email does not guarantee your request until you receive a response. ISA CEU's and SAF CFE's are anticipated.



Insect and Disease Seminars

It's that time of year when finding a tree insect or disease pest is difficult, if not impossible. But it is also the time of year to review and learn new information on our annual foes. Robert Lawrence and Simeon Wright, MDC's I&D tag team, will present two seminars on insect and diseases that do or may affect our trees.

The first seminar will be at the Wildcat Glades Conservation and Audubon Center in Joplin on February 7, 2011 at 1:30 PM. Contact Jon Skinner (jon.skinner@mdc.mo.gov, 417-629-3423) to register. The second seminar will be at the Springfield Nature Center in Springfield on February 8, 2011 at 9:30 AM. Contact Cindy Garner (cindy.garner@mdc.mo.gov, 417-895-6880 ext. 237) to register. Both seminars are scheduled for 2.5 hours with ISA CEU's or SAF CFE's anticipated.



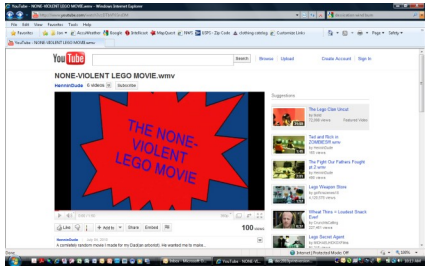
Norway maple
Acer platanoides

A large tree, Norway maple has a mature height of 50 to 70 feet and width usually 2/3rds of the height. With a moderate growth rate, it develops a dense, round top-crown with maturity. Appropriate for a medium yard and park plantings, it has potential along streets if adequate planting strips are present. It has a shallow root system and is known for developing girdling roots. Leaves are large, five lobed, and develop dense shade. When a leaf is broken from its stem at the point of attachment, milky-colored sap will ooze from the injury. A native of Europe, many cultivars have been developed. Over planted in other parts of the continent, it can invade native woodlands and has been banned from sale in New Hampshire for this trait. Red cultivars should be avoided due to heat stress and tatter issues.

Plant illustration by Jenny M. Lyverse, from *Landscape Plants for Eastern North America, 2nd Edition*, Harrison L. Flint Author

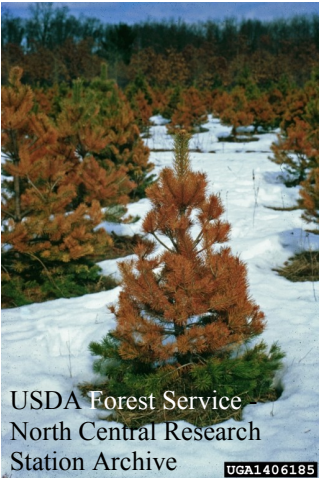
Web Site Review

Someone got creative and made the “Non-Violent Lego Movie”. In this video, a father and son are transported to a non-violent place. They find an Emerald Ash Borer, attempt to kill it but are stopped. After demonstrating what this bug can do, an angry mob chases down the bug. No live emerald ash borers were harmed in the making of this film. See it and laugh at: www.youtube.com/watch?v=DTbVF6Snd3M



Pest Highlight - Winter Burn (Desiccation).

Trees and shrubs that maintain needles and leaves year round, like pines, junipers, arborvitaes, spruces, boxwoods, and hemlocks, are susceptible to a winter injury called winter burn and winter desiccation. This injury is caused by the tree continuing to transpire moisture out of its needles, but not being able to replace it quickly enough or sometimes not at all. Warm winter days with frozen ground or windy winter days can contribute to this problem. Later the dried needles that died, fall from the tree. Slight winter damage is not a problem and is common, but moderate to severe damage will either cause decline of the tree to possibly killing it out right.



Preventative protection is the best way to defend against this seasonal threat. Application of anti-desiccant sprays, irrigating your tree when the ground is not frozen, and/or installing temporary burlap fences/screens to shade and provide wind protection can reduce damage and stress on your tree.

December 9

ISA Certified Arborist Exam, Springfield, MO, Registration deadline November 19, 2010, Register at www.isa-arbor.com/certification/becomeCertified/

December 13

ISA Certified Arborist Exam, Kansas City, MO, Registration deadline November 23, 2010, Register at www.isa-arbor.com/certification/becomeCertified/

December 18

ISA Certified Arborist Exam, Oklahoma City, OK, Registration deadline December 2, 2010, Register at www.isa-arbor.com/certification/becomeCertified/

January 9 - 10

National Green Centre, AMERICA's Center, St. Louis, MO, Conference information and registration at www.nationalgreencentre.org/

January 24

Tree Appraisal Workshop, Wildcat Glades Conservation and Audubon Center, Joplin, MO, Register by contacting Jon Skinner (jon.skinner@mdc.mo.gov, 417-629-3423)

January 26

ISA Certified Arborist Exam, La Vista, NE, Registration deadline January 10, 2010, Register at www.isa-arbor.com/certification/becomeCertified/

January 26 - 28

Midwestern Chapter of ISA Annual Conference, La Vista, NE, Conference information at www.mwisa.org/mc/page.do?sitePageId=37767

February 7

Insect and Disease Seminar, Wildcat Glades Conservation and Audubon Center, Joplin, MO, Register by contacting Jon Skinner (jon.skinner@mdc.mo.gov, 417-629-3423)

February 8

Insect and Disease Seminar, Springfield Nature Center, Springfield, MO, Register by contacting Cindy Garner (cindy.garner@mdc.mo.gov, 417-895-6880 ext. 237)

February 23

ISA Certified Arborist Exam, Ames, IA, Registration deadline February 7, 2010, Register at www.isa-arbor.com/certification/becomeCertified/

March 1 - 3

Missouri Community Forestry Council Annual Conference, Truman State University, Kirksville, MO, Information at www.mocommunitytrees.com/conference2011.html

Give me of your bark, O Birch Tree!
Of your yellow bark, O Birch Tree!
Growing by the rushing river,
Tall and stately in the valley.
-- Henry Wadsworth Longfellow

WHAT'S HAPPENING

“The Stump” web site:
<http://thestumpnewsletter.weebly.com>

To add or remove your subscription, update your address, change contact information or convert from the paper to the email - web version of “The Stump” contact:

Jon Skinner
Urban Forester
Forestry Division
MO Dept. of Conservation
201 W. Riviera Dr., Ste. B
Joplin, MO 64804
417-629-3423
Jon.Skinner@mdc.mo.gov



Use of names of commercial products or organizations does not imply an endorsement or recommendation by the Missouri Department of Conservation