

# THE STUMP

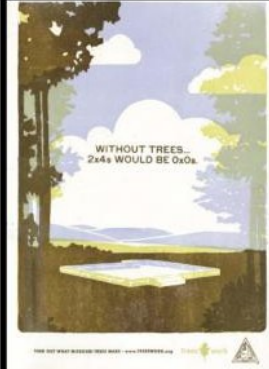
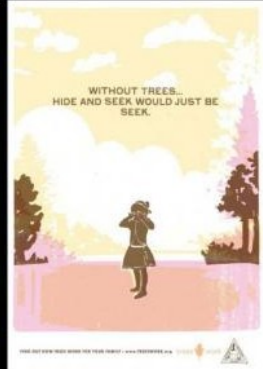
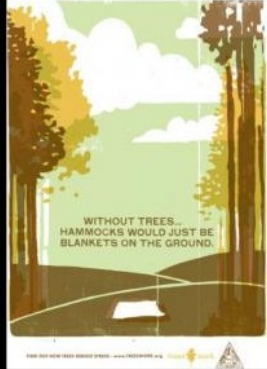
INFORMATION BY THE BOARD FOOT

APRIL 2014

KNOT THE HOLE NEWS

## Trees Work Poster Phrase Contest

Finish the phrase  
"Without Trees . . ."



Your slogan could be the next Trees Work poster!

You can become immortalized by creating the next slogan for the Trees Work Posters. The winner will receive a complete set of the "Without Trees..." handcrafted letterpress posters plus 10 extra posters with their slogan to give to family and friends!

Trees Work is an education program expounding the benefits of trees. The posters are examples of what the program is doing. You can see larger versions of the posters at: <http://mdc.mo.gov/node/22657>. The phrases on the first posters are humorous and thought provoking.

To participate, complete the phrase "Without Trees..." and email it to [treeswork@mdc.mo.gov](mailto:treeswork@mdc.mo.gov) by April 30, 2014. You do not need to worry about the artwork. MDC will create it. The contest is open to Missourians of all ages. Submit as many slogans as you wish. Remember to provide your name and a way to contact you in the email.

## Urban Wood Utilization Workshops

What do you do with all of the wood coming from yard trees, street trees, and park trees? Unfortunately, much of it winds up in a debris pile somewhere. Some is used for firewood and some turned into mulch or compost. A select few logs get used to make something like a table, art, picture frame, flooring, or other useful items.

More logs from our communities could be used for great products, all it takes is the right person to develop the market. Are you that person?

Two workshops will discuss the potential for using urban trees as a profitable wood product. Learn about taking urban discarded timber resources and produce desirable niche products such as flooring, furniture, lumber, mulch/ compost and other valuable products. Topics include: Testimonials by individuals that do it; Missouri Urban Wood brand and AgriMissouri - how they can help your business; Insect and diseases that may affect the trees you desire; and a Sawmill and log handling demonstration.



Each workshop is a copy of the other, so come to the one closest to you. Seating is limited so call early to reserve your spot - only one person per organization please. The meetings are in Springfield and Carthage. The exact location will be provided when you register. PTH, ISA, and SAF education credits are being requested.

**Registration deadline is April 30.**

**May 7, 2014 9 AM—4 PM**  
**Springfield**  
**417-895-6880**

**May 8, 2014 9 AM—4 PM**  
**Carthage**  
**417-629-3423**



**Hedge maple**  
*Acer campestre*

Native to Europe, the near east, and Africa, hedge maple is a small to medium sized tree. It ranges from 25 to 35 feet tall and wide. It has a moderate growth rate. Usually rounded and dense with branches to the ground. Pruning will be needed to raise the crown. Easily transplanted and adaptable to urban soil and environmental conditions. Leaves are opposite, 2 to 4 inches long and wide, 3 to 5 lobes, and deep dark green in summer. Fall color varies from yellow to yellow-green in fall. It is commonly "hedged" in Europe making dense walls of foliage. A few cultivars are documented. Unfortunately, the specie is not common in the nursery trade.

Plant image by Trees Planet. <http://treesplanet.blogspot.com/2013/05/acer-campestre-field-maple-hedge-maple.html>

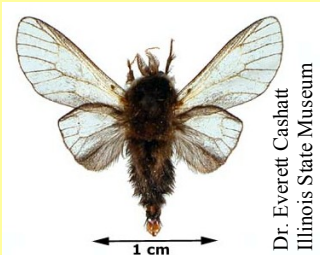
## Website Review - Urbanwood.org

Urbanwood.org is an online marketplace for products made of wood from trees in the communities of southeast Michigan. They created this site in 2005 as way to utilize the wood available from dead and removed trees in their communities. This is a great example of how trees from local communities can be used for products we all want. Take a look around this site and see what your possibilities could be. Visit: <http://urbanwood.org>.

### Pest Highlight - bagworms



Bagworms (*Thyridopteryx ephemeraeformis*) are the larva of moths. They are primarily a pest of eastern redcedar and other junipers, but will attack all sorts of plants. They damage plants by eating the foliage. Bagworms overwinter as eggs inside the bag of their mother. In approximately mid-May to the end of June, the eggs hatch. The small larva exit the bag on silk strings and swing with the wind until landing on a plant. They first build a bag of their own, then begin feeding. Only their heads and leg segments extend from the bag at any time. As they grow and molt, they enlarge their bags. In August, they pupate. After pupation, the male clearwing moths fly to female bags to complete the cycle. The best time to control bagworms is when they are small, long before most are noticed. Early scouting is required to catch an infestation. Control options vary from hand pulling bags to use of various chemicals. K-State Research and Extension have a good bulletin on bagworms with control options at: [www.ksre.ksu.edu/bookstore/pubs/MF728.pdf](http://www.ksre.ksu.edu/bookstore/pubs/MF728.pdf).



#### April 4

Missouri Arbor Day

#### April 10

State MCFC meeting, 10 AM - 2 PM, MDC State Office, Jefferson City, MO

#### April 19

Exeter Arbor Day

#### April 24

Joplin MCFC meeting, 7 - 9 AM, Wildcat Glades Conservation & Audubon Center, Joplin

#### April 24

Carthage Arbor Day

#### April 25

Joplin / National Arbor Day

#### May 1

2014 TRIM Grant request for payment / documentation due to local MDC forester

#### May 7

Urban Wood Utilization Workshop, Springfield, Register by calling 417-895-6880

#### May 7

ISA Certified Arborist, Utility Specialist, and Municipal Specialist Exam, Jefferson City, MO, Registration deadline April 21, 2014, Register at [www.isa-arbor.com/certification/becomeCertified/](http://www.isa-arbor.com/certification/becomeCertified/)

#### May 8

Urban Wood Utilization Workshop, Carthage, Register by calling 417-629-3423

#### May 22

Joplin MCFC meeting, 7 - 9 AM, Wildcat Glades Conservation & Audubon Center, Joplin

#### June 1

2015 TRIM Grant application must be postmarked to MDC state office

#### June 12

State MCFC meeting, 10 AM - 2 PM, MDC State Office, Jefferson City, MO



Alone with myself  
The trees bend to caress me  
The shade hugs my heart.  
~Candy Polgar

## WHAT'S HAPPENING

“The Stump” web site:  
<http://thestumpnewsletter.weebly.com>

To add or remove your subscription, update your address, change contact information or convert from the paper to the email - web version of “The Stump” contact:

Jon Skinner  
Urban Forester  
Forestry Division  
MO Dept. of Conservation  
201 W. Riviera Dr., Ste. B  
Joplin, MO 64804  
417-629-3423  
[Jon.Skinner@mdc.mo.gov](mailto:Jon.Skinner@mdc.mo.gov)



Use of names of commercial products or organizations does not imply an endorsement or recommendation by the Missouri Department of Conservation